

**AREA: 28M<sup>2</sup>**

**STUDIO**

**1 BATHROOM**



## FEATURES

READY FOR  
INSTALLATION

BATHROOM LAMINATED  
FLOORING KITCHEN

PLUMBING & FITTINGS  
WIRING AND ELECTRICAL  
FITTINGS

LIGHTING

## OPTIONIONAL

TRANSPORT & INSTALLATION

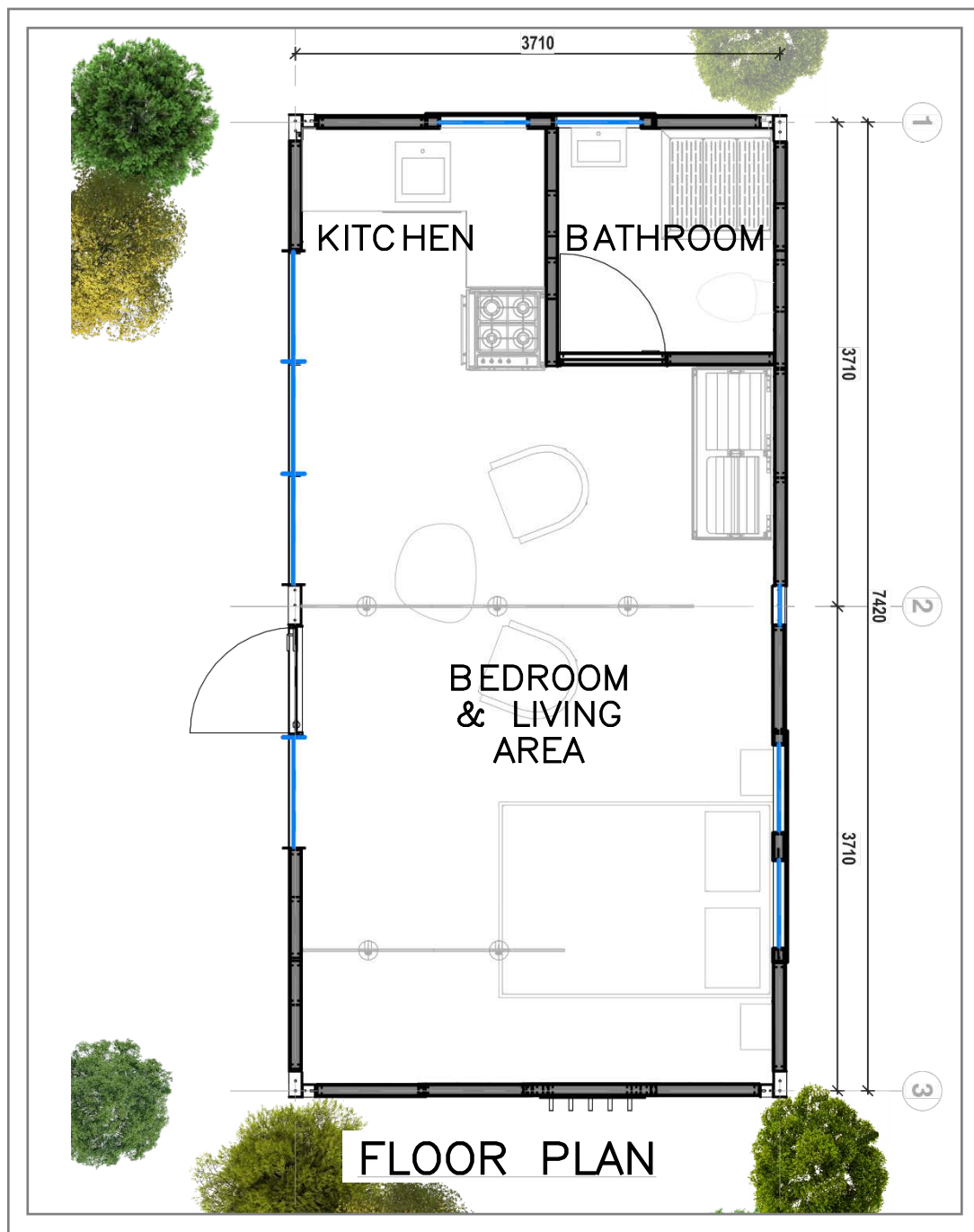
BUILT IN CUPBOARDS

WINDOW BLINGS

PERGOLA & DECK

ELECTRICAL & GAS  
APPLIANCES

DOUBLE GLAZING



INTERNAL LAYOUT MAY BE CUSTOMISED

